

# MSACL 2019 US: Sponsorship Opportunities (in USD \$)

Select				
Sponsor Level	Platinum	Gold	Silver	Bronze
Sponsorship Amount	\$10,300	\$7,200	\$3,800	\$1,700
# Available	3	4	5	8
Exhibit Booth Discount	15%	10%	5%	0%
Corporate Workshop Discount	15%	10%	5%	0%
Logo on Program Cover	Yes	No	No	No
Logo <sup>#</sup> on Slide Placeholder in Session Rooms	Yes	Yes	No	No
Option to Place Banner(s) at Exhibit Hall entrance*	2	1		
Logo <sup>#</sup> on Official Conference Banner at Entrance	Yes	Yes	Yes	No
Logo <sup>#</sup> on Official Conference Banner at Registration Desk	Yes	Yes	Yes	Yes
Color Ad in Conference Digest (pages)	2	1		
Website Logo Placement: Left, under navigation	Yes	Yes	Yes	Yes

\* max. dimensions of 36x96". Must be standing banner.

<sup>#</sup> Relative Logo size correlates to Sponsor Participation Level.

Platinum: 100%

Gold: 85%

Silver: 70%

Bronze: 50%

- See following page for representational examples.

- Not applicable to *Website Logo Placement: Left, under navigation* where all logos occupy a similarly-sized area.

**All payments must be made in United States Dollars \$**

Company: \_\_\_\_\_ Contact Name: \_\_\_\_\_

Email: \_\_\_\_\_

**For Payment by Check:** Make payable to "MSACL" and mail to: MSACL, 205 12th St., Del Mar, CA, 92014, USA

**For Payment by Wire Transfer:**

Bank information will be on the invoice you receive following submission of this application.

**For payment by CC:**

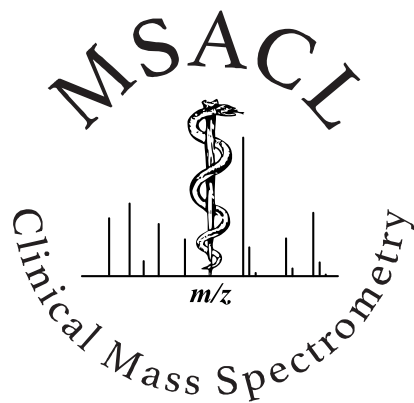
Name on Card: \_\_\_\_\_ Authorized Signature: \_\_\_\_\_

CC#: \_\_\_\_\_ Exp: \_\_\_\_\_ Card Type: \_\_ MC \_\_ Visa \_\_ AmEx

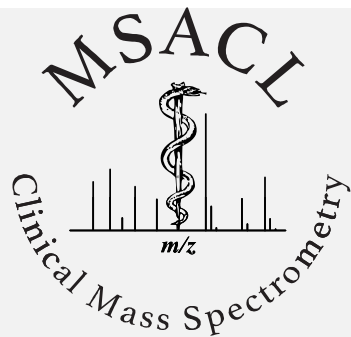
**FAX to: 858-876-1873 or Email to: [chris.herold@MSACL.org](mailto:chris.herold@MSACL.org)**

## Relative Logo Size Comparison for Differing Levels of Corporate Sponsorship

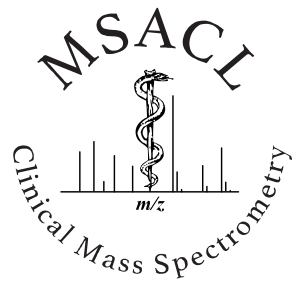
Sizes are representational examples demonstrative of an approximate relative size comparison. These examples are not final models representing the exact size in any dimension of sponsor logos.



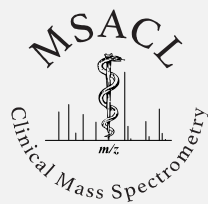
Platinum



Gold



Silver



Bronze